

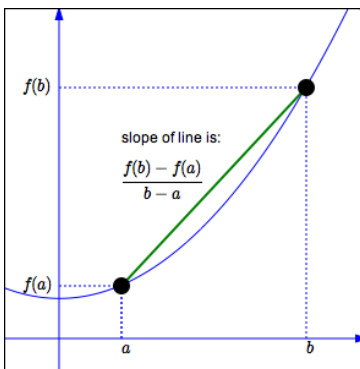
## 4.6 – 4.9 Unit Outline

Name \_\_\_\_\_ Date \_\_\_\_\_ Period \_\_\_\_\_

Learning Target	Assessment	M.L. 4	M.L. 3	M.L. 2	M.L. 1
1. I can calculate the average rate of change of a function over a specified interval using an equation or a table.	4.6 WS 4.6-4.7 Quiz 4.6-4.9 Review 4.6-4.9 Test				
2. I can interpret the average rate of change of a function.	4.6 WS 4.6-4.7 Quiz 4.6-4.9 Review 4.6-4.9 Test				
3. I can estimate the average rate of change from a graph.	4.6 WS 4.6-4.7 Quiz 4.6-4.9 Review 4.6-4.9 Test				
4. I can write an equation in one variable from a story problem and solve.	4.7 WS 4.6-4.7 Quiz 4.6-4.9 Review 4.6-4.9 Test				
5. I can solve equations using substitution.	4.7 WS 4.6-4.7 Quiz 4.6-4.9 Review 4.6-4.9 Test				
6. I can solve inequalities using a sign chart.	4.7 WS 4.6-4.7 Quiz 4.6-4.9 Review 4.6-4.9 Test				
7. I can solve a formula for a given variable.	4.7 WS 4.6-4.7 Quiz 4.6-4.9 Review 4.6-4.9 Test				
8. I can write and solve equations in two variables.	4.8 WS 4.8-4.9 Quiz 4.6-4.9 Review 4.6-4.9 Test				
9. I can solve a system of inequalities in two variables by graphing.	4.8 WS 4.8-4.9 Quiz 4.6-4.9 Review 4.6-4.9 Test				
10. I can combine functions by adding, subtracting, multiplying, and dividing and state the domain.	4.9 WS 4.8-4.9 Quiz 4.6-4.9 Review 4.6-4.9 Test				
11. I can compose functions and state the domain.	4.9 WS 4.8-4.9 Quiz 4.6-4.9 Review 4.6-4.9 Test				

**Mastery Level 4** = I've got this - I can teach this to others. **Mastery Level 3** = I understand - I can do this by myself.

**Mastery Level 2** = I mostly get it - I can do this with help. **Mastery Level 1** = I don't understand - I cannot do this yet.



1. addition  $(f + g)(x) = f(x) + g(x)$
2. subtraction  $(f - g)(x) = f(x) - g(x)$
3. multiplication  $(fg)(x) = f(x) \cdot g(x)$
4. division  $\left(\frac{f}{g}\right)(x) = \frac{f(x)}{g(x)}$
5. composition  $(f \circ g)(x) = f(g(x))$

